

D400XT INDUSTRIAL TAPPING & DRILLING MACHINE

Multi-Purpose HEAVY DUTY MAGNETIC DRILLING MACHINE

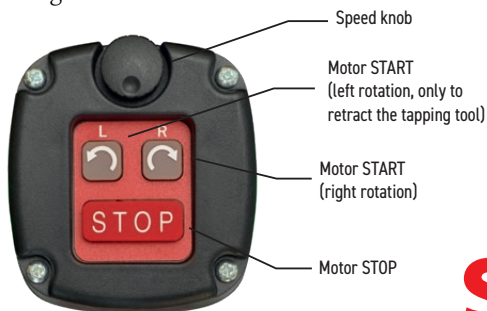
The D400XT drilling machine is suitable for many industrial hole making and tapping applications.

Powerful 2300 W, variable speed motor enables cutting capacity up to 4" (100 mm) and drilling capacity up to 1-1/4" (31.75 mm). Forward and reverse functions allow tapping of pre-drilled holes up to 1-1/4" (M30) by using the quick change tapping system from Steelmax.

4-speed gear and continuous speed adjustment help to set the optimal speed depending on size of diameter, material grade and tool in use. Intelligent speed control system maintains the constant speed regardless of the changing load and increases tool life. Innovative 360-degree visual monitoring system facilitates machine operation and increases work safety.

FEATURES

- 360- degree visual monitoring system indicates current condition of the drill and gives safety and diagnostic information, e.g. worn brushes
- Most powerful motor in its class (among MT3 drills)
- Overload & Overheat protection
- 4-Speed gear with continuous speed adjustment
- Intelligent speed control system maintains stable speed regardless of load changes
- Tapping of through and blind holes with intelligent load control
- Drilling with both TCT & HSS cutters and twist drill bits from small through large diameters
- Full electronic motor control
- Electronic clutch and speed control
- Rigid design extends tool life
- Tilt sensor (gyroscopic) stops motor in case of machine break away
- Innovative smart magnet with reduced weight
- Intuitive control panel at top of the drill
- Large coolant reservoir



Intuitive control panel at top of the drill

Steelmax
The tools of innovation.



Counterclockwise (CCW) rotation
User-friendly control of tapping tool release

D 400XT Technical Specifications

Motor Speeds (under load)	75-110 rpm (gear 1) 135-200 rpm (gear 2) 220-320 rpm (gear 3) 390-570 rpm (gear 4)
Motor Power	2300 W
Weight	55 lbs (25 kg)
Max Milling Capacity	4" (100 mm)
Max Drilling Capacity	1-1/4" (31.75 mm)
Max Tap Size	1-1/4" (M30)
Stroke	9" (225 mm)
Max Depth of Cut	4" (100 mm)
Voltage	115 V, 50-60Hz 230 V, 50-60 Hz
Magnetic clamping force (surface with the thickness of 25 mm and roughness Ra=1.25)	4045 ft lbs (18000 N)
Magnet base dimensions	4.3" x 8.7" x 2" 110 mm x 220 mm x 50 mm
Min. Workplace Thickness	3/8" (10 mm)
Spindle	MT3
Tool Holder	3/4" (19 mm) or 1 1/4" (32 mm) Weldon
Part Number 115V, 50-60 Hz	SM-D-400XT
Part Number 230V, 50-60 Hz	SM-D-400XT-230

Standard shipping set:

- Magnetic drilling machine
- Metal shipping box
- Handle (3 pcs)
- MT3 Arbor with 3/4" (19 mm) Weldon tool holder
- MT3 drift
- Integrated cooling system
- Safety strap
- Set of tools with wedge
- Instruction manual
- Protective spring for cooling hose
- MT2 drift
- 6 mm hex wrench
- 5 mm hex wrench with a handle
- 2.5 mm hex wrench
- 8 mm combination wrench
- Tool can
- Locking connector (only in 115 V version)

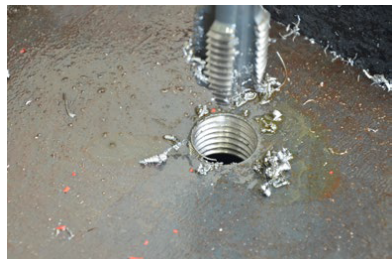
360-degree Visual Monitoring System – VMS



Drilling Capacity up to 4" (100 mm)
Max Depth of cut up to 4" (100 mm)



Screw tapping



Drill Operational Status		Ready To Operate (Solid Green)
		Normal Operation (Solid White)
		Motor Overheat (Solid Red)
		Emergency Stop/Overload (Solid Blue)
		Emergency Stop/Low Adhesion (Solid Violet)
Safety Information		Inadequate Adhesion (Flashing Green)
		Near Overload (Flashing Blue)
Diagnostics		Emergency Stop/ Voltage Drop (Red Flashes to Blue)
		Emergency Stop/ Worn Brushes (Red changes to Green)

Steelmax

The tools of innovation.

15335 E. Fremont Drive, Centennial, CO. 80112

For ordering and customer service, or to request detailed product information or demonstration videos, contact:

1-87STEELMAX

STEELMAX.COM

sales@Steelmax.com

Fax: 303-690-9172

